

Violoncello 2 **Concerto per 2 Violoncelli ed Archi**

Edito secondo il manoscritto  
da Orfeo Mandozzi  
Minusio Settembre 2013

in Sol minore RV 531

ANTONIO VIVALDI  
(1678-1741)

**Allegro**

Measures 1-4 of the cello part. Measure 1 is a whole rest. Measure 2 starts with a quarter note G2, followed by eighth notes A2, B2, C3, D3, E3, F3, G3. Measure 3 has a double sharp (2\*) above the first two notes, G2 and A2, which are beamed together. Measure 4 continues with eighth notes B2, C3, D3, E3, F3, G3.

Measures 5-7. Measure 5: quarter notes G2, A2, B2, C3. Measure 6: eighth notes D3, E3, F3, G3, A3, B3, C4, D4. Measure 7: quarter notes E4, F4, G4, A4.

Measures 8-11. Measure 8: eighth notes G2, A2, B2, C3, D3, E3, F3, G3. Measure 9: quarter notes A2, B2, C3, D3. Measure 10: quarter notes E3, F3, G3, A3. Measure 11: quarter notes B3, C4, D4, E4.

Measures 12-15. Measure 12: eighth notes G2, A2, B2, C3, D3, E3, F3, G3, with a trill (tr) above. Measure 13: eighth notes A2, B2, C3, D3, E3, F3, G3, A3. Measure 14: eighth notes B2, C3, D3, E3, F3, G3, A3, B3. Measure 15: eighth notes C4, D4, E4, F4, G4, A4, B4, C5.

Measures 16-18. Measure 16: eighth notes G2, A2, B2, C3, D3, E3, F3, G3. Measure 17: eighth notes A2, B2, C3, D3, E3, F3, G3, A3. Measure 18: eighth notes B2, C3, D3, E3, F3, G3, A3, B3.

Measures 19-21. Measure 19: eighth notes G2, A2, B2, C3, D3, E3, F3, G3. Measure 20: eighth notes A2, B2, C3, D3, E3, F3, G3, A3. Measure 21: eighth notes B2, C3, D3, E3, F3, G3, A3, B3.

Measures 22-27. Measure 22: eighth notes G2, A2, B2, C3, D3, E3, F3, G3. Measure 23: eighth notes A2, B2, C3, D3, E3, F3, G3, A3. Measure 24: eighth notes B2, C3, D3, E3, F3, G3, A3, B3. Measure 25: eighth notes C4, D4, E4, F4, G4, A4, B4, C5. Measure 26: eighth notes D5, E5, F5, G5, A5, B5, C6, D6. Measure 27: eighth notes E6, F6, G6, A6, B6, C7, D7, E7.

Measures 28-30. Measure 28: eighth notes G2, A2, B2, C3, D3, E3, F3, G3. Measure 29: eighth notes A2, B2, C3, D3, E3, F3, G3, A3. Measure 30: eighth notes B2, C3, D3, E3, F3, G3, A3, B3.

Measures 31-33. Measure 31: eighth notes G2, A2, B2, C3, D3, E3, F3, G3. Measure 32: eighth notes A2, B2, C3, D3, E3, F3, G3, A3. Measure 33: eighth notes B2, C3, D3, E3, F3, G3, A3, B3.

2\*) Original: g-f#-g. However to continue the imitation it is recommended to play bb-a-bb.

36



39



43



47



51



54



58



61



65



68



70



Measures 70-72: Bass clef, key signature of one flat. Measure 70 features a complex rhythmic pattern with eighth and sixteenth notes. Measure 71 continues with similar rhythmic activity. Measure 72 begins with a whole rest, followed by a measure with a 7/8 time signature change and eighth notes.

73



Measures 73-75: Bass clef, key signature of one flat. Measure 73 continues the rhythmic pattern. Measure 74 features a melodic line with eighth notes. Measure 75 continues with eighth notes.

76



Measures 76-79: Bass clef, key signature of one flat. Measures 76-79 consist of a steady eighth-note rhythmic pattern.

80



Measures 80-82: Bass clef, key signature of one flat. Measure 80 starts with a whole rest, followed by eighth notes. Measure 81 features a melodic line with eighth notes. Measure 82 continues with eighth notes.

83



Measures 83-86: Bass clef, key signature of one flat. Measure 83 features a melodic line with eighth notes. Measure 84 has a whole rest. Measure 85 features a complex rhythmic pattern with eighth notes. Measure 86 continues with eighth notes.

87



Measures 87-89: Bass clef, key signature of one flat. Measures 87-89 consist of a steady eighth-note rhythmic pattern.

90



Measures 90-92: Bass clef, key signature of one flat. Measure 90 features a melodic line with eighth notes. Measure 91 continues with eighth notes. Measure 92 continues with eighth notes.

93



Measures 93-94: Bass clef, key signature of one flat. Measures 93-94 consist of a steady eighth-note rhythmic pattern.

95



Measures 95-97: Bass clef, key signature of one flat. Measure 95 has two whole rests. Measure 96 features a steady eighth-note rhythmic pattern. Measure 97 features a melodic line with eighth notes, ending with a fermata.

Largo

First staff of music for the Largo section, measures 1-3. It begins with a whole rest, followed by a series of eighth notes and a trill (tr) on the second measure.

Second staff of music for the Largo section, measures 4-6. Measure 4 starts with a measure rest, followed by eighth notes and a trill (tr) in measure 5. Measure 6 continues with eighth notes and a trill (tr).

Third staff of music for the Largo section, measures 7-11. It consists of a continuous line of eighth notes with various accidentals.

Fourth staff of music for the Largo section, measures 12-15. It features eighth notes with trills (tr) in measures 12, 13, and 14, ending with a half note in measure 15.

Allegro

First staff of music for the Allegro section, measures 1-6. It features a steady eighth-note pattern in 3/4 time.

Second staff of music for the Allegro section, measures 7-12. It continues the eighth-note pattern with some chromaticism.

Third staff of music for the Allegro section, measures 13-18. Measure 13 is marked 'Vc.1'. The staff shows eighth notes and a more complex rhythmic pattern in measure 17.

Fourth staff of music for the Allegro section, measures 19-23. It features eighth notes with trills (tr) and a final eighth-note pattern in measure 23.

Fifth staff of music for the Allegro section, measures 24-25. Measure 24 has eighth notes, and measure 25 has a whole rest followed by a fermata with a '2' above it.



74



80



86



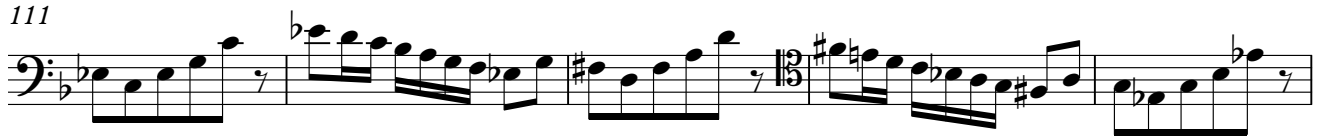
91



96



111



116



120



125

