

Le Carnaval des Animaux

Carnival of the Animals

VIOLONCELLE

Camille Saint-Saens

Introduction

N° 1 et Marche Royale du Lion

Andante maestoso
1^{er} Piano 8^{ve} velle

p *cresc.* 1

Piano *ff* **Allegro non troppo** Piano

Più allegro velle *ff*

1^{er} Piano velle pizz. 2 2

1^{er} Piano velle arco *ff*

1 6 *ff*

2 7 *ff*

8 *ff*

C.B. velle *ff*

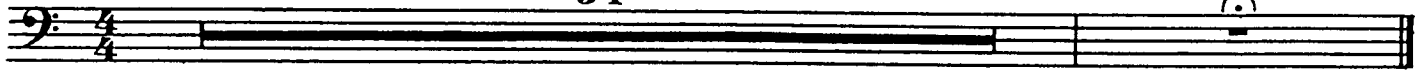
VIOLONCELLE

N° 2

Poules et Coqs

Allegro Moderato

34



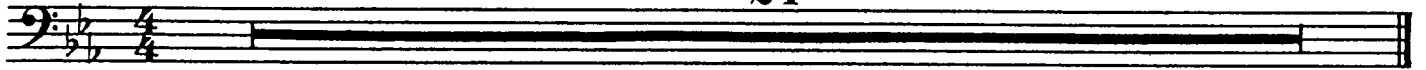
N° 3

Hémiones

(Animaux véloces)

Presto furioso

24



N° 4

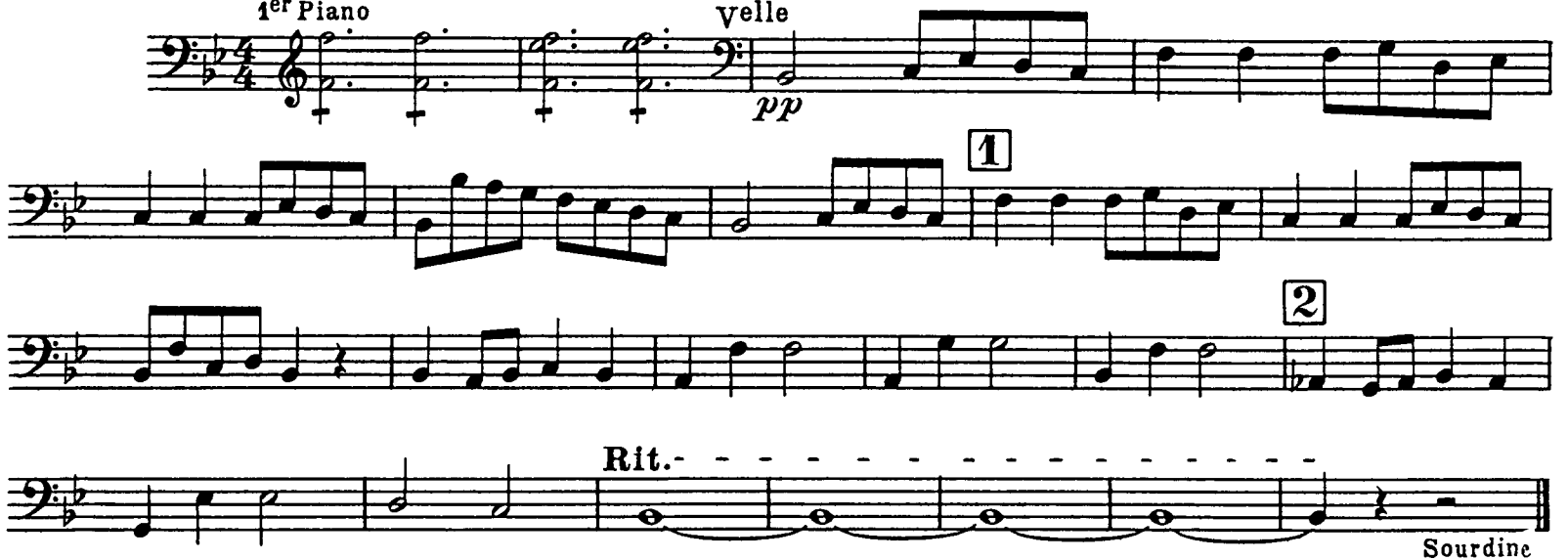
Tortues

Andante maestoso

1^{er} Piano

velle

pp

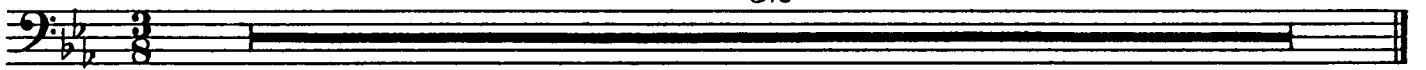


N° 5

L'Elephant

Allegretto pomposc

52



N° 6

Kangourous

Moderato



N° 7

Aquarium

Andantino



ôtez la Sourdine

N° 8 Personnages à longues oreilles

Tempo ad lib.

24

N° 9 Le Coucou au fond des bois

Andante

42

N° 10 Volière

Moderato grazioso

pizz.

p

pp sul ponticello

pp

VIOLONCELLE

N° 11

Pianistes

Allegro moderato

3 Piano *arco* *velle* **1** 3

Piano *velle* **2** 3 Piano

velle **3** 3 Piano *velle* **4** Piano

velle

N° 12

Fossiles

Allegro ridicolo

ff pizz.

arco **1** pizz.

arco

pizz. *p* *arco*

2 4 *p*

3 pizz. *ff*

arco pizz.

4 arco

5 velle pizz. p

4 Clar. pizz. p

arco 1 6 ff

N° 13

Le Cygne

Andantino grazioso
Piano

velle

p

1

2

3

p mf

Rit. Lento a Tempo rit.

dim. pp

1

VIOLONCELLE

N° 14

Final

Molto allegro

Piano

8^{va} 8^{va} 8^{va} 8^{va} velle *f*

1 **1** 4

pte Fl. *tr*

2 velle *p* *tr*

tr *cresc.* *f*

3 *f* 2 3 4 5 6

4 7 8 9 10 11 12

pizz. *p*

5 *pizz.* *p*

VIOLONCELLE

6

arco

First musical staff, bass clef, starting with a series of quarter notes and then moving to eighth notes. Dynamics include *f* and *sim.*

Second musical staff, bass clef, continuing the eighth-note pattern.

7

von

Third musical staff, bass clef, featuring a double bar line and a change to a treble clef. Dynamics include *Velle* and *Piano*.

Fourth musical staff, bass clef, continuing the treble clef passage. Dynamics include *Velle* and *Piano*.

Fifth musical staff, bass clef, starting with a treble clef and then returning to a bass clef. Dynamics include *Velle* and *p*.

8

Sixth musical staff, bass clef, consisting of a continuous eighth-note line. Dynamics include *cresc.*

9

Seventh musical staff, bass clef, starting with a few quarter notes and then moving to eighth notes. Dynamics include *f*.

Eighth musical staff, bass clef, featuring eighth-note patterns with slurs.

10

Ninth musical staff, bass clef, featuring eighth-note patterns with slurs and dynamics like *ff*.

Tenth musical staff, bass clef, concluding the page with eighth-note patterns and dynamics like *ff*.